



CMY-13R6-PCT

High Precision Cam Chain Tensioner Yamaha R6 (2009-2013)

PARTS LIST

- Cam Chain Tensioner 1

NOTE: You will need a replacement timing cover gasket and cam chain tensioner gasket from your local Yamaha dealer.

<<<<INSTALLATION OF THIS PRODUCT SHOULD BE PERFORMED BY A **QUALIFIED TECHNICIAN** >>>>
<<<<<<PLEASE READ INSTRUCTIONS CAREFULLY BEFORE BEGINNING INSTALLATION >>>>>>

NOTE: Best installation is achieved when the motor is removed from chassis. Pictures are from a motor removed from the chassis. Installation may be done while the motor remains in the chassis.

THIS IS A CRITICAL MECHANICAL PART that should be installed by a qualified technician or mechanic. For specific mechanical or removal instructions refer to the Yamaha Service Manual.

DO NOT TURN THE MOTOR WITHOUT A TENSIONER IN THE MOTOR.

- 1) Remove all bodywork, seats, gas tank, air box, and throttle bodies to access the cylinder head cover.
- 2) Remove ignition coils, spark plug, and the cylinder head cover.
- 3) Remove the clutch cable and disconnect the crankshaft position sensor.
- 4) Remove the timing cover, aka pickup rotor cover, on the right side of the bike.
- 5) Rotate the timing sprocket, aka pickup rotor, to top dead center-TDC (the line on the sprocket is horizontal or in line with the gap in the mating surface on the left). Always rotate clockwise. **(PHOTO 1)**
- 6) Remove stock cam chain tensioner, keep bolts for re-installation.
- 7) Prior to installation, set the Graves Cam Chain Tensioner to have 13mm of the adjustment bolt protruding from the nut when nut is secured. **(PHOTO 2)**
- 8) Install Graves Cam Chain Tensioner with recommended new cam chain tensioner gasket. The gasket's stamped "L" should be sticking out on the lower left corner. Tighten mounting bolts to 9ft. lbs. (12Nm).

Top Dead Center
(TDC) is indicated by
the "T"

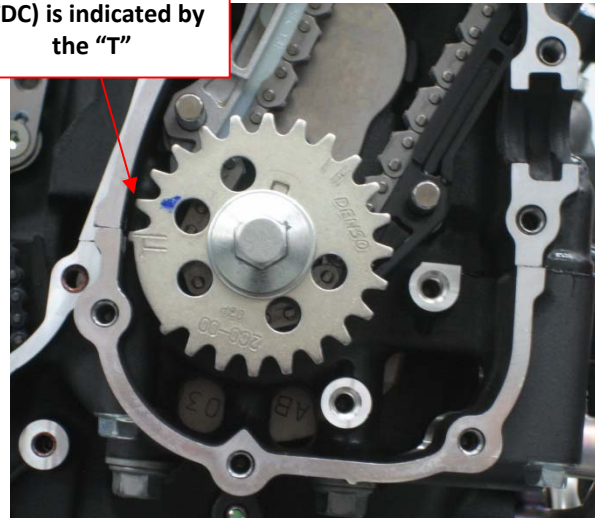


PHOTO 1



PHOTO 2



www.GRAVESPORT.com

Toll Free: 800-867-6480 Fax: 818-902-3821

7629 Densmore Avenue
Van Nuys, Ca. 91406

- 9) Check tension on cam chain once cam chain tensioner is installed. Total free play recommended should be approximately 6mm. Measure by pushing down on the cam chain span between the sprockets to rotate them inward. **(PHOTO 3)**

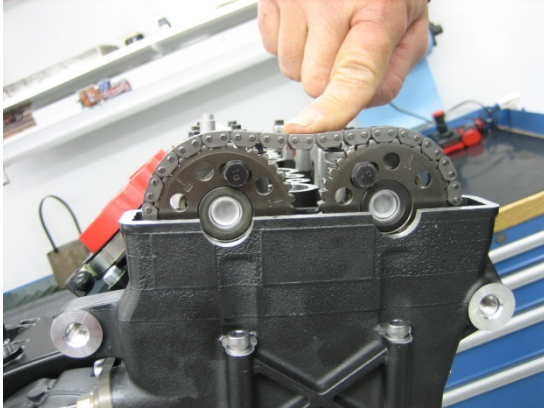


PHOTO 3

- 10) Take a 3mm wide tool and a straight edge and measure 3mm of displacement in one direction. This will be half of the total free play and the best way to achieve the total. If too tight or loose, adjust the adjustment bolt to allow for correct free play. The cam chain should be taut at the 3mm. **(PHOTO 4)**



PHOTO 4

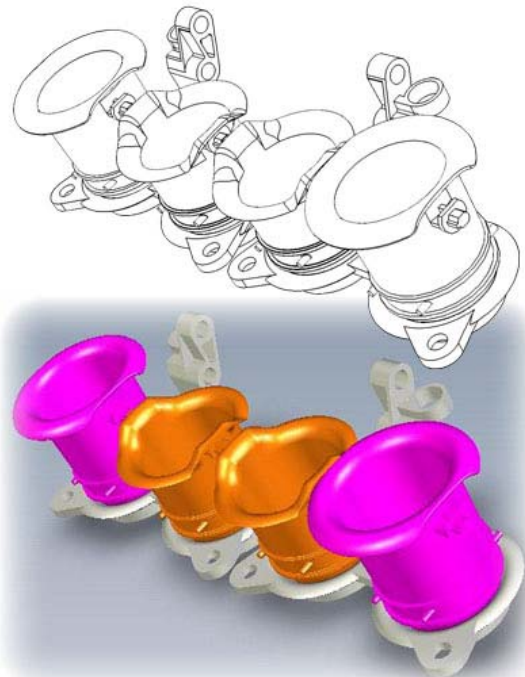
- 11) Chain should be stiff, but with appropriate free play.
12) Re-install cylinder head cover. Re-install the timing cover with recommended new OEM gasket or YEC kit gasket.
13) Re-install all appropriate parts back on motorcycle.
14) When starting the bike, check for any new or loud noises. The cam chain tensioner may not be appropriately adjusted.



CSY-06R6-Y

*This part works best when paired with the
**GRAVES Adjustable Cam Sprockets and
Graves Velocity Stack Kit.***

Also available at www.GRAVESPORT.com!



ABY-08R6-REVB

The purchaser releases Graves Motorsports, Inc from all liabilities pertaining to the installation and use of purchased parts. Purchaser recognizes that any alteration and/or modifications to the vehicle may increase the risk of injury or accident. **This product is intended for Closed Course Competition Use Only** and may render the vehicle illegal for use on public roads.