



FEY-16XSR9-K

Fender Eliminator 2016 Yamaha SXR900

Parts List:

- Fender Eliminator Bracket 1
- 6 x 16mm Allen Bolts 2

- 6mm Washers . black 2
- 6mm Nyloc Nuts . black 4

<<<<< IT IS RECOMMENDED THAT THIS PRODUCT BE INSTALLED BY A QUALIFIED TECHNICIAN >>>>>

- 1) Remove the passenger seat using the key under the tail section.
- 2) Remove the 4 . 8mm bolts that hold down the seat lock bracket. **Photo 1**

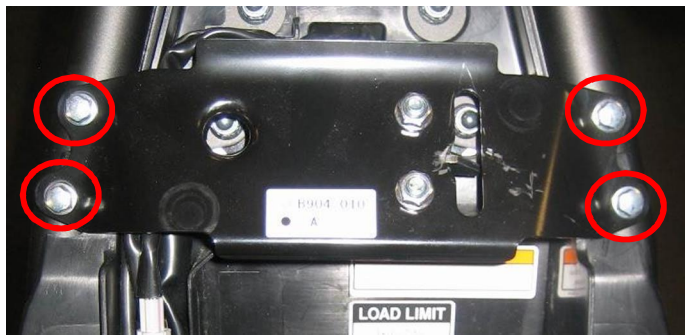


Photo 1

- 3) Unplug the wiring from the stock fender. There will be 4 plugs.
- 4) Remove the 4 . 10mm cap nuts. Be sure to hold the stock fender assembly while removing the cap nuts. As you are removing the fender assembly, pull the 4 wire lines through the access hole.
- 5) Remove the wire and seat lock key cover by unlocking the 2 push pins. Push in on the sides, pull up then slide forward to remove. **Photo 2**

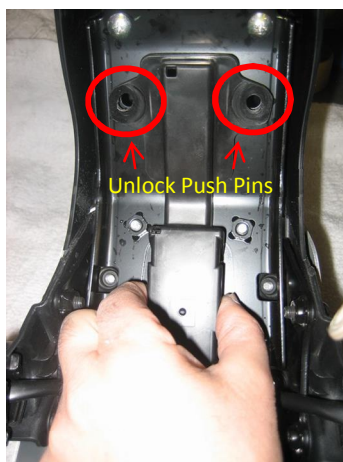


Photo 2

- 6) Remove the taillight assembly by removing the 2 0 10mm nuts.

- 7) Remove the rear fender cover by removing the 4 . T20 Torx head screws and the 1 . 10mm nut.

Photo 3

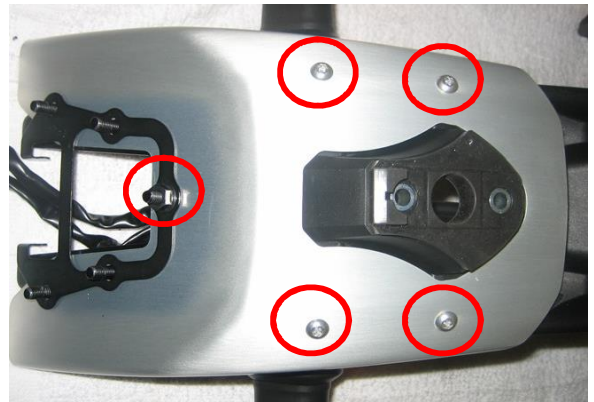


Photo 3

- 8) Remove the 4 . Philips head screws from under the fender assembly then the 4 . 4mm allen bolts from the top to remove the inner fender brace.
- 9) Cut the rear plastic part of the fender following the cut line in the **Photo 4**. After your cut has been made, clean up the edges for a nice smooth finish. If needed, you can remove the turn signals to make your cut.



Photo 4

The purchaser releases Graves Motorsports, Inc. from all liabilities pertaining to the installation and use of purchased parts. Purchaser recognizes that any alteration and/or modifications to the vehicle may increase the risk of injury or accident. **This product is intended for Closed Course Competition Use Only** and may render the vehicle illegal for use on public roads.

- 10) Place the 2 . stock step washers and the 2 black 4mm allen bolts in the top of the Graves bracket and the 2 supplied nyloc nuts under to fasten the Graves mount to the fender assembly. **Photo 5**

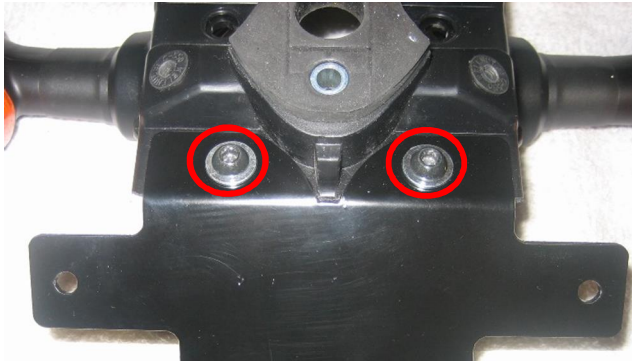


Photo 5

- 11) Reinstall the rear fender cover and tail light as it came off.
- 12) Re-install the wire seat lock cover in the reverse order it came off using the supplied hardware, the 2 . 6mm counter sunk allens, 2 . 6mm washers and the 2 nyloc nuts fastening the wire cover to the Graves mount.
- 13) Once the assembly is back together with your new Graves Fender Eliminator, you can install the assembly back onto the bike in the reverse order it came off.
- 14) Plug the wiring back in and reinstall the seat lock bracket. Turn the bike on to check the tail light and turn signals.

Must haves for your new 2016 XSR900

Clear, Flush Mount Marker Lights
compliment your new Fender Eliminator



TS401C1

Smog Block Off Plates



AB015

Add a Full Titanium Exhaust System to your
XSR900 for optimum performance
2016 XSR Full Titanium Exhaust



EXY-14FZ09-FTT

Find these and more at:
www.GRAVESPORT.com